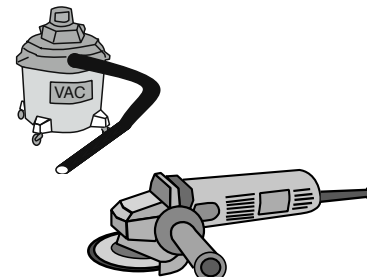
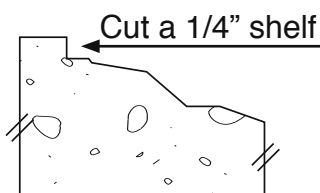
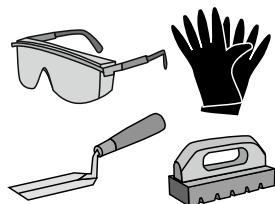


ROADWARE 10 MINUTE CONCRETE MENDER™ BULK SPALL AND CRACK REPAIR APPLICATION GUIDE



ROADWARE 10 MINUTE CONCRETE MENDER™

BULK APPLICATION INSTRUCTIONS



Tools and Supplies

Getting Started: Always use safety glasses when working with any concrete repair project. **Always read the label on the container and follow all safety instructions.**
FOR PROFESSIONAL USE ONLY

You will need buckets, a margin trowel, a finishing stone, and 30-40 grit manufactured silica sand, available from your Roadware Distributor, or equivalent. Do not use beach sand, concrete sand, or most natural sands unless directed.

Preparation

Use a dry diamond blade to remove all loose debris and clean the repair down to solid concrete. For high traffic areas, carve a small edge around the repair with the diamond blade to create a solid transition. Use a shop vacuum to remove dust and debris. Always use appropriate safety equipment when cutting concrete. The concrete surface and sand must be dry before making repairs. Ambient application temperature range is -35°F to 100°F. See Roadware for below freezing application instructions.



1/2 Part Side (A)

1) Measure one part of side A into a container. For this batch we are using 4 oz. (118 ml).

We do not recommend batches larger than 64 oz. per side due to fast setting nature of Roadware 10 Minute Concrete Mender™.

1/2 Part Side (B)

2) Measure one part of side B into a container. For this batch we are using 4 oz. (118 ml).

We do not recommend batches larger than 64 oz. per side due to fast setting nature of Roadware 10 Minute Concrete Mender™.

1 to 1 Ratio

3) The mixing ratio is one part side (A) to one part side (B) by volume. Do not alter this ratio.

Pictured above is 4 oz. of Side (A) and 4 oz. of side (B) for a total of 8 oz. when mixed together.

Mix 10 Seconds

4) Pour one side into a larger mixing bucket and add the other side to it. Mix by hand or a slow speed drill mixer for about 10 seconds.



Add 2 Parts Sand

5) Pour 16 oz. of silica sand by volume into the 8 oz. of mixed liquid Concrete Mender™.



Mix

6) Mix by hand until well blended. Up to 4 oz. of additional sand may be added to get the desired consistency.



Check Consistency

7) Tap the side of the bucket to check for the proper consistency. If the top surface looks wet, you have it just right.



Place

8) Working quickly, place the mixed material into the repair area. The entire batch must be used within 5 minutes or less, depending on the batch size and temperature.



Check Saturation

9) Trowel back some material and make sure the Concrete Mender is wetting out the surface of the concrete. If the surface is not solid or the concrete is of poor quality, you may need to "prime" the surface with pure mixed liquid Concrete Mender™.



Trowel Once

10) Continue to make the repair. Use the entire batch before it sets. Do not attempt to "fix" a dry or setting batch by adding more liquid. Do not overwork the material. Just a once over with a clean trowel and let the material set.



Finish in 10 Minutes

11) Allow to cure until the repair turns grey in color (about 10 minutes at 70 degrees F). Finish smooth with a rubbing brick, sander or concrete polisher.



Blend In

12) Use extra silica sand as a grit to give you a smooth finish.



Open for Traffic

13) Finished repair is now ready for coating, polishing, or heavy traffic.



Exclusive slab to slab Microdoweling™ action, provided by Roadware 10 Minute Concrete Mender™, links concrete slabs together, restores aggregate interlock, and allows for full-traffic, dynamic-load transfer, in 10 Minutes. This Microdoweling™ action is more compatible with concrete and more effective than epoxy injection. Millions of micro-dowels penetrate the concrete and then bond, side by side, broken and jointed slabs. Hairline cracks, delamination cracks, irregular cracks, spalled control joints and variable depth spalls are quickly repaired with this amazing technology.

Roadware 10 Minute Concrete Mender™ is ultra-thin for deep penetration that Microdowels into concrete and won't pop out like epoxy.

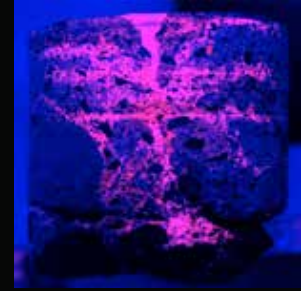
ROADWARE CONCRETE REPAIR PRODUCTS COVERAGE CHART

ROADWARE 10 MINUTE CONCRETE MENDER™

Approximate yield with 40-30 silica sand mixed 2 parts sand to 1 part liquid.

SIDE A	SIDE B	SAND	MIXED MATERIAL	CUBIC INCHES
4 OZ	4 OZ	16 OZ	17.5 OZ	32
8 OZ	8 OZ	32 OZ	35 OZ	64
16 OZ	16 OZ	64 OZ	70 OZ	128
1/2 GAL	1/2 GAL	2 GAL	2.2 GAL	508
1 GAL	1 GAL	4 GAL	4.4 GAL	1016

General formula for higher sand content: (liquid + sand)0.733



This concrete core sample shows the extent of penetration into concrete when photographed under UV light.

ORDERING INFORMATION

ROADWARE 10 MINUTE CONCRETE MENDER™

80105	50ml mini-cartridge
80300	300x300ml twin-cartridge
80020	2 gallon kit in one gallon containers
80050	10 gallon kit in five gallon cans

ROADWARE CONCRETE MENDER™ Off-white

Use for color matching, tinting, and polished concrete floors.

70105	50ml mini-cartridge
70300	300x300ml twin-cartridge
70020	2 gallon kit in one gallon containers
70050	10 gallon kit in five gallon cans

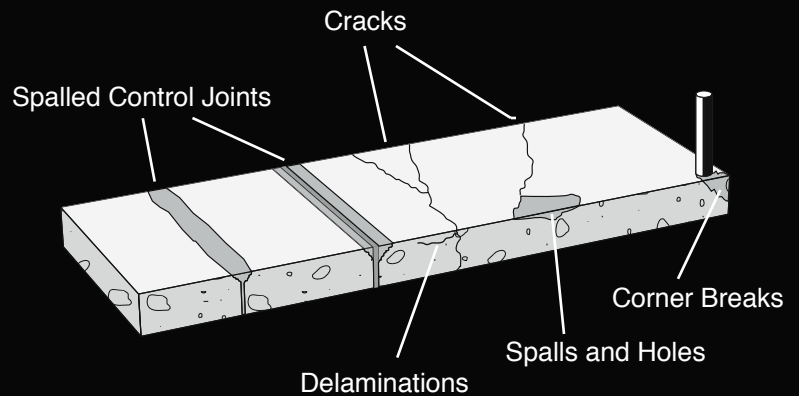
For more information including:

- Product Data Sheets
- Instructional Videos
- MSDS Sheets
- Specifications
- Featured Applications
- Online Product Estimator

Visit the Roadware website at:

www.roadware.us

Made in the U.S.A.



1-800-522-7623

381 Bridgepoint Way
South St. Paul, MN 55075
www.roadware.us