

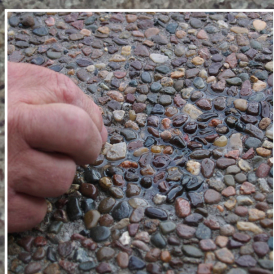
"Now it's Clear!"

NEW Roadware MatchCrete™ Clear Concrete Repair.

Areas of use:

Repair cracks and spalls
Restore "loose" joints
Restore aggregate interlock
Diamond polished floors
Decorative Joints and Cracks
Repair Hairline Cracks
Color Blended Repairs
Parking Decks
Bridge Decks
Entryways
Retail Floors
Exposed Aggregate
Sidewalks
Driveways
Walkways
and More!
Indoor or

**Sets in
20 minutes!**



Repair Exposed Aggregate



Repair walkways and patios.

Roadware MatchCrete™ Clear

Product Description:

Roadware MatchCrete™ Clear (MCC) is a two component aliphatic polyurethane for repairing cracks, spalls, and joints in concrete subject to UV exposure from sunlight. This material is clear in appearance when applied and cured. Colored sand and pigments may be added to create color stable repairs that match most any decorative or shade of concrete surface. MCC will not significantly change color with exposure to sunlight over time.

Roadware MatchCrete™ Clear (MCC) is used to quickly repair cracks and spalls in concrete that is exposed to sunlight and a color compatible appearance over time is desired.

Features:

- Sets in 20 – 40 minutes. Fully cures in a few hours.
- Remains clear, reflects surrounding colors.
- User may add colored sand, pigment, or concrete dust to match existing concrete.
- May be honed smooth in a few hours at 70°F.
- May be needle tip injected.
- Will accept heavy traffic.
- Will not become brittle over time.

Uses:

- Repairing colored, stamped, or decorative concrete.
- Repairing polished concrete.
- Repairing exposed aggregate concrete.
- Repairing any concrete surface where appearance is critical such as retail entry ways, doorways and pool decks.
- Repairing concrete floors that receive large amounts of sunlight such as lobbies and atriums.

Benefits:

- Better looking appearance.
- Satisfied property owners.
- Reduced down time.
- Less call backs. Repairs will not change color over time.
- Labor Saving

Availability:

Roadware MatchCrete™ Clear is available in:

- 71100 50 ml cartridge with needle tip
- 71300 300x300 cartridge
- 71020 two gallon bulk kit
- 71050 ten gallon kit



Roadware Incorporated
381 Bridgepoint Way
South Saint Paul, MN 55075
800-522-7623
www.roadware.us

Roadware MatchCrete™ Clear

Basic Application:

1. Meet with the floor owner to determine the ultimate floor repair goal and desired outcome. In some situations, it may be better to repair cracks and defects as they are. In other situations, it may be better to open them up with a diamond blade. While no repair material can make cracks and defects disappear, with MatchCrete™ Clear you can make these areas much less noticeable. MCC is a semi-rigid material that should not be used in high movement joints and cracks. Always determine the underlying cause of the concrete failure as a guide for the best course of action. **READ AND UNDERSTAND ALL MSDS SHEETS AND PRECAUTIONS BEFORE USING THIS MATERIAL. FOR PROFESSIONAL USE ONLY BY TRAINED APPLICATORS.** Always use gloves and safety glasses. Do not get this material on your skin.
2. Prepare floor cracks, joints, spalls, and pop-outs in accordance to standard application instructions.
3. Sand selection: By altering the sand used with MatchCrete™ Clear, different color results can be achieved. Some experimentation may be required to get the desired result. Start with dry silica sand and a dusting of concrete dust as the material cures. Other types of sands such as concrete sand, colored quartz, and flint may be used. Choose the best combination to match your floor. Any type of sand you use should be hard, free of dirt and organic material, and completely dry.
4. Color: MatchCrete™ Clear will cure to a crystal clear appearance. Small amounts of powdered concrete colors such as Solomon Colors may be mixed in with the sand as needed. Experimentation to determine the best sand and color combination will be required to get the desired effect.
5. Mixing: Apply MatchCrete™ Clear from a properly assembled dual cartridge with flow controller directly to the repair area. Use silica sand to stop material from flowing away from the repair area. Always apply material and add sand as you go. Do not pre-place the sand and attempt to flow the material into the sand.
6. Use a margin trowel to finish the repairs. For a flush repair, leave the repairs slightly higher than grade. The excess material will be honed off later. Dry concrete dust may be added as the material cures for blending purposes.
7. Allow the repairs to fully cure for 60- 120 minutes depending on the temperature and the size of the repair before honing or grinding.

Frequently Asked Questions

Will MatchCrete™ Clear change color in direct sunlight over time?	MatchCrete™ Clear uses a special aliphatic polyurethane formula that resists UV color change. Color change is possible if the sand or pigments added to the repair change color over time.
Can I repair hairline cracks with the needle tip mixers?	Yes, MatchCrete™ Clear is compatible with Roadware Needle Tip Mixers and accessories.
What kind of color can I add?	For most repairs, use colored sand or quartz to match the desired color. Small amount of powdered concrete pigments may be blended with the sand prior to mixing with MatchCrete™.
Can I add concrete dust to MatchCrete™?	You can add a limited amount of concrete dust to MatchCrete™ Clear as the repair cures to get a desired appearance. It is best to experiment and test before use.
Can I mix and match colors?	Absolutely! Mixing and matching colors and sand to get just the color and texture you want is what MatchCrete™ is all about.
Can I add too much color?	Yes, use just enough color needed for the job. Adding too much powdered color or cement powder to the sand can hurt the performance of the repair.
Can I leave the repair clear?	Yes, adding sand and color is optional. You can use the material as is for a clear effect.

Note: FOR PROFESSIONAL USE ONLY. The techniques and procedures listed above are for informational use and are based on standard techniques developed by Roadware customers, distributors and contractors. They should not be construed as a specification for any specific application or use. It is up to the professional applicator to determine the ultimate appropriate use of the material.



Roadware Incorporated
381 Bridgepoint Way
South Saint Paul, MN 55075
800-522-7623
www.roadware.us